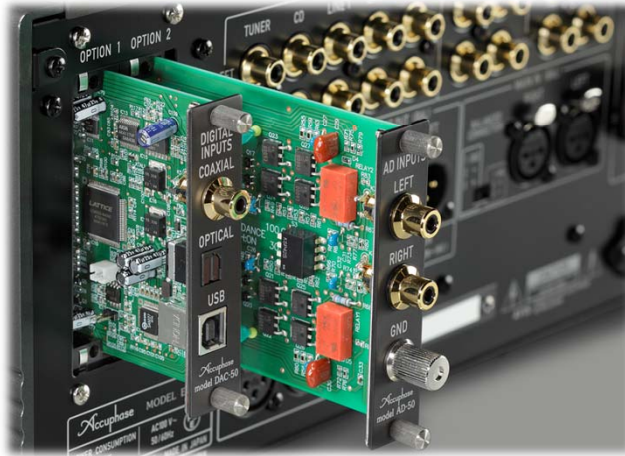


Analog Disc Input Board AD-50



Accuphase Laboratory, Inc.

1

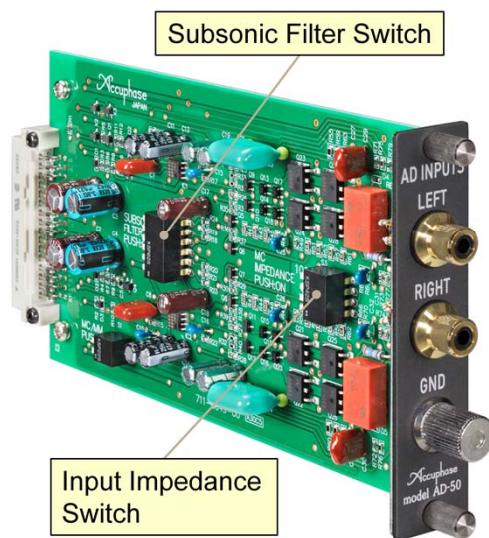
With the release of E-650, Accuphase renews the dedicated Analog Disc Input Board AD-50 to expand the optional capabilities.

AD-50 is the 5th generation dedicated Analog Disc Input Board.

The greatest technical feature is ultra low noise performance close to the Phono EQ amp C-37.

Functions

- MC/MM switchable
 - MC Gain: 66dB
 - MM Gain: 40dB
- Input impedance selectable
 - MC: 30, 100, 300 Ω
 - MM: 47k Ω
- Subsonic Filter
 - 25Hz, 12dB/oct



Accuphase Laboratory, Inc.

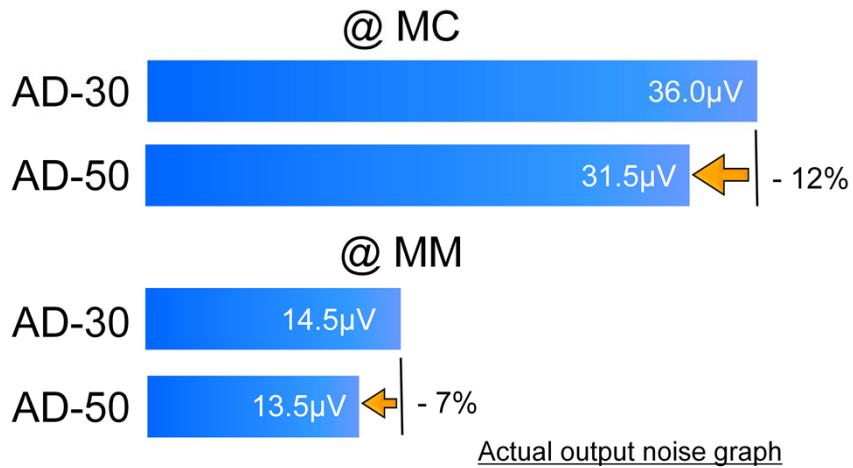
2

AD-50 is the function-rich Analog Disc Input Board.

**These functions are all same as AD-30's.

Ultra Low Noise

- Superior noise characteristics close to the Phono EQ amp C-37



Accuphase Laboratory, Inc.

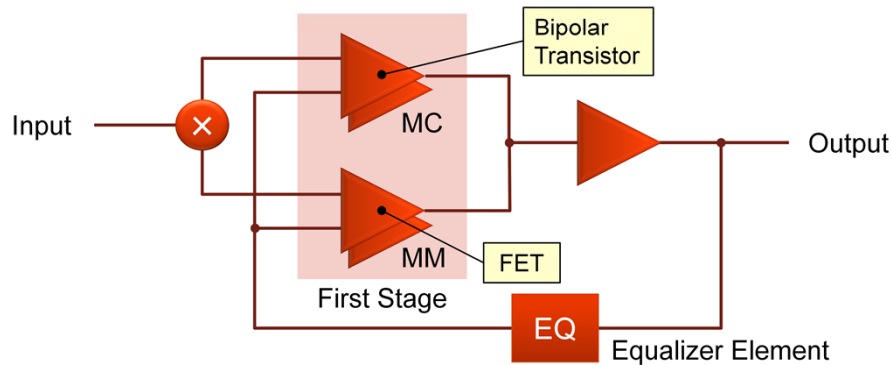
3

AD-50 shows the ultra low noise performance. Its output noise voltage is 12% lower than the former model AD-30 at MC setting.

This noise characteristics are close to the Stereo Phono Amplifier C-37.

Block diagram

- First Stage
 - MC: Paralleled Bipolar Transistor input differential amplifier
 - MM: Paralleled FET input differential amplifier



Accuphase Laboratory, Inc.

4

AD-50 switches MC/MM setting at first stage to achieve the Ultra low noise performance.

MC setting: Paralleled Bipolar Transistor input differential amplifier

MM setting: Paralleled Junction FET input differential amplifier

Backward compatibility

- Available models
 - CX-260, C-245/265, C-2000/2110/C-2120
 - E-530/550/560/600/650
 - E-406V/407/408/450/460/470
 - E-306V/307/308/350/360/370
 - E-211/212/213/250/260/270



E-406V in 1996



E-650 in 2017

Accuphase Laboratory, Inc.

5

AD-50 has the wide backward compatibility, it can be used with not only the current models but lots of legendary amplifiers.